

# ROEQ DS500

## Docking station

for ROEQ carts with  
MiR AMRs



ROEQ DS500 docking station is designed for ROEQ S-Cart500 Ext and S-Cart500W. The DS500 solution comes in two versions: **Active** and **Passive**. DS500 Active locks carts in place via electromagnets, ensuring maximum stability during loading and unloading of carts. DS500 Passive holds carts in place with no lock function.



## Features

### Both DS500 Active and Passive

- Floor-mounted
- Can be used manually or with AMR
- Fit ROEQ S-Cart500 Ext and S-Cart500W
- Docking missions set up via ROEQ Assist
- Docking accuracy, single cart =  $\pm 1$  mm
- Docking accuracy, multiple carts =  $\pm 3$  mm

### DS500 Active

- Locks carts firmly in place via electromagnets
- Cart presence sensor enables loading and unloading only when cart is docked

### DS500 Passive

- Holds cart in place – no electricity

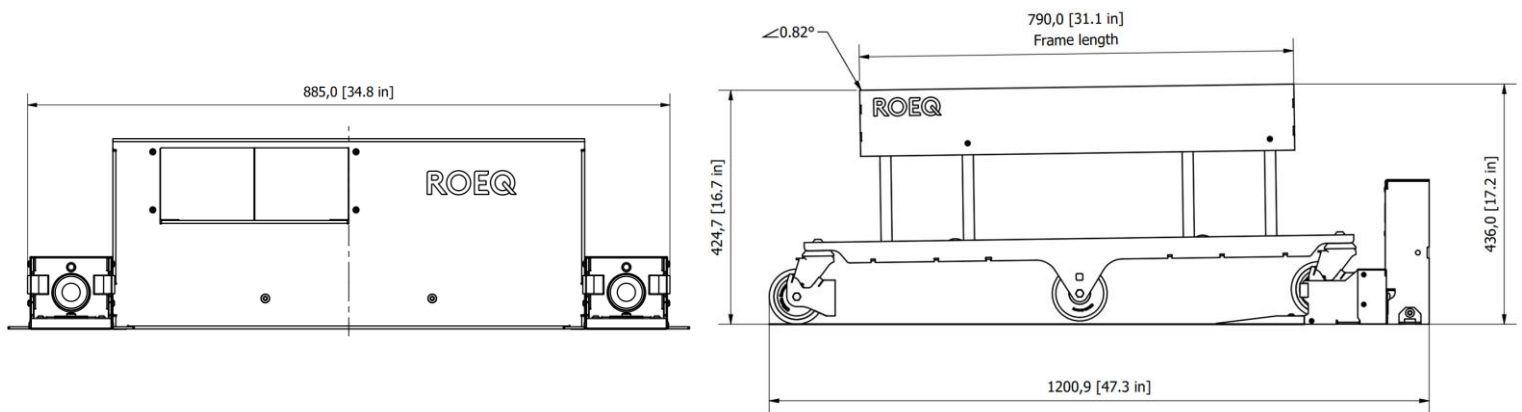
## Specifications

**Robot compatibility:**  
MiR250

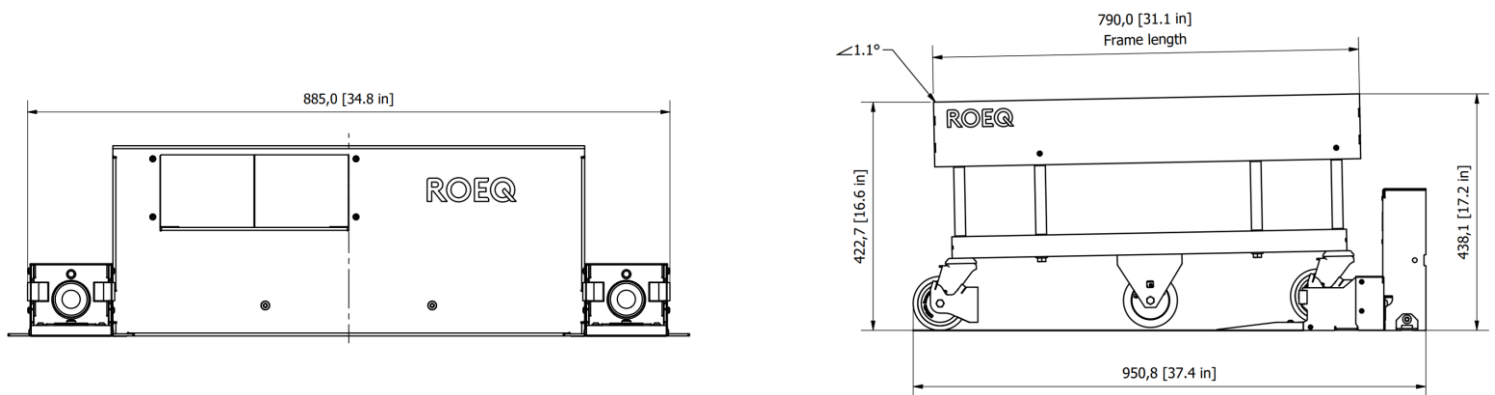
**Payload:**  
S-Cart500 Ext up to 500 kg  
S-Cart500W up to 500 kg

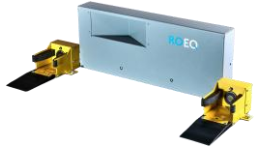

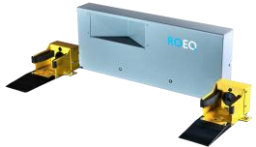

**ROEQ product compatibility:**  
S-Cart500 Ext w. TMS-C300 Ext & TMS-C500 Ext  
S-Cart500W w. TMS-C300 Ext & TMS-C500 Ext

# DS500 for S-Cart500 Ext



# DS500 for S-Cart500W



Product no.	Product name	Description	
282s2000	DS500 Active	Docking station for S-Cart 500 Ext and S-Cart500W. Uses electromagnets to lock cart in place.	
282s9864	Foot protection for DS500 Active	Foot protection on cart wheels that enables electromagnetic locking.	
282s1000	DS500 Passive	Docking station for S-Cart500 Ext and S-Cart500W. Uses electromagnets to lock cart in place.	
282s9863	Foot protection for DS500 Passive	Foot protection on cart wheels that enables passive docking.	

Visit [roeq.dk](http://roeq.dk) for more information or to see films of products in action.