

UR8 Long

Technical specification

Long Reach. Lean Footprint. No compromise.

The UR8 Long offers a 1750 mm reach and an 8 kg payload in a compact, lightweight design. Ideal for welding, pick & place and quality inspection, it excels in applications requiring precise linear motion and high-speed acceleration. With advanced joint architecture and accurate torque control, it's the perfect cobot for tasks demanding both reach and precision.

Today, more than 100,000 UR collaborative industrial robots have been delivered to customers across industries and around the world. The newest series of UR cobots brings unparalleled performance, adaptability and user experience.

Updated September 2025.

Copyright © 2025 by Universal Robots A/S. All rights reserved.

Features

IP Classification	IP65
Noise	< 67 dB(A)
Status identification	Light ring at robot base
Arm mounting	Any orientation
I/O Ports at tool flange	
Digital In	2
Digital Out	2
Analog In	2
Power supply voltage	12/24 V
Power supply	2 A (Dual pin), 1 A (Single pin)

Physical

Footprint	Ø204 mm
Materials	Aluminum, plastic, steel
Tool flange	ISO 9409-1-50-4-M6
Connector type	M8 8-pin female
Cable length (robot arm)	6 m (236 in)
Weight without cable	44.7 kg (98.5 lbs)
Humidity	≤ 90% RH (non-condensing)

Contact

Universal Robots A/S
 Energivej 51
 5260 Odense
 Denmark

+45 89 93 89 89
sales@universal-robots.com
universal-robots.com

3-Position Enabling Teach Pendant

Features

IP classification	IP54
Humidity	≤ 90% RH (non-condensing)
Display resolution	1280 x 800 pixels

Physical

Materials	Plastic
Teach pendant size (W x H x D)	300 mm x 231 mm x 50 mm (11.8 in x 9.1 in x 1.97 in)
Weight	1.8 kg (3.961 lbs) including 1 m of teach pendant cable
Cable length	4.5 m (177.17 in)

Control Box

Features

IP classification	IP44
Humidity	≤ 90% RH (non-condensing)
I/O Ports	
Digital In	16
Digital Out	16
Analog In	2
Analog Out	2
Quadrature digital inputs	4
I/O Power Supply	24V, 2A

Industrial protocols	Modbus TCP (Client/Server) Ethernet/IP Adapter PROFINET device, PROFIsafe ROS/ROS2
----------------------	---

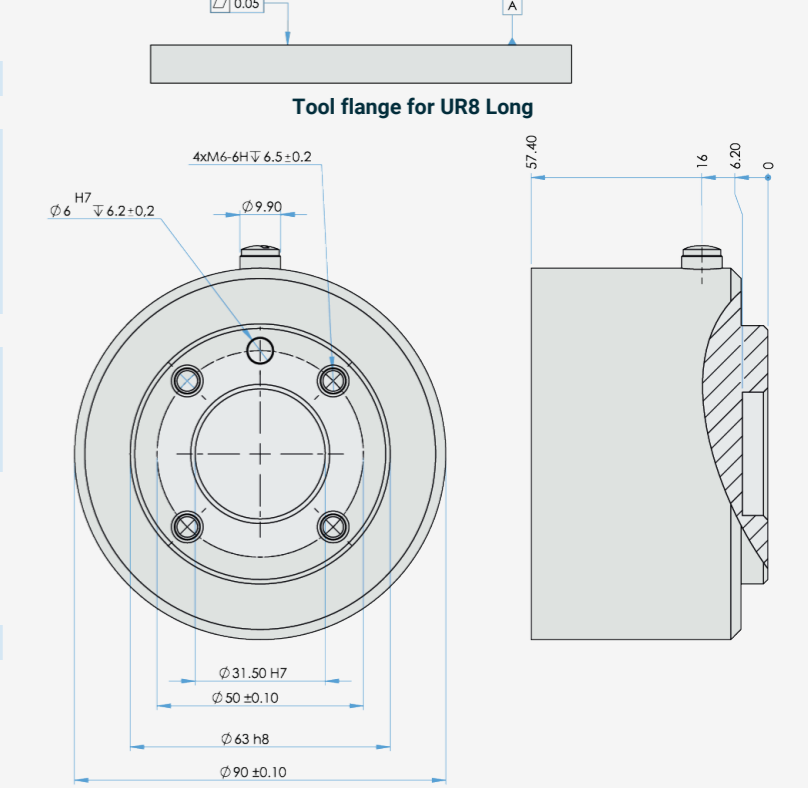
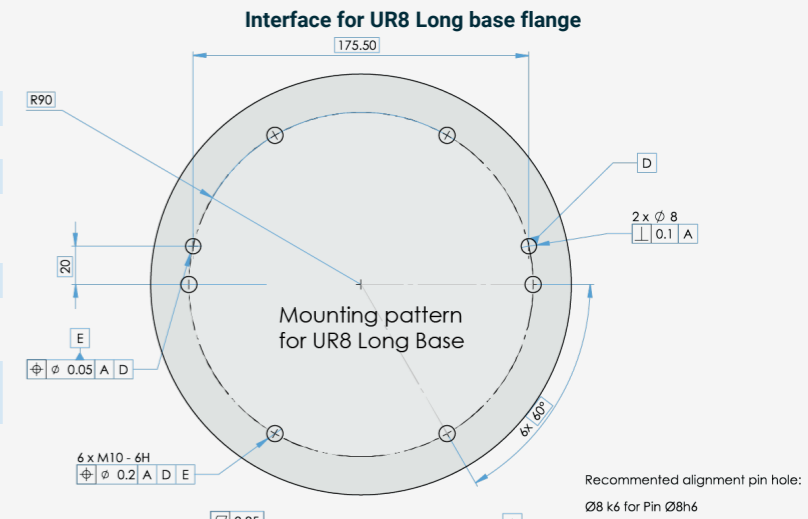
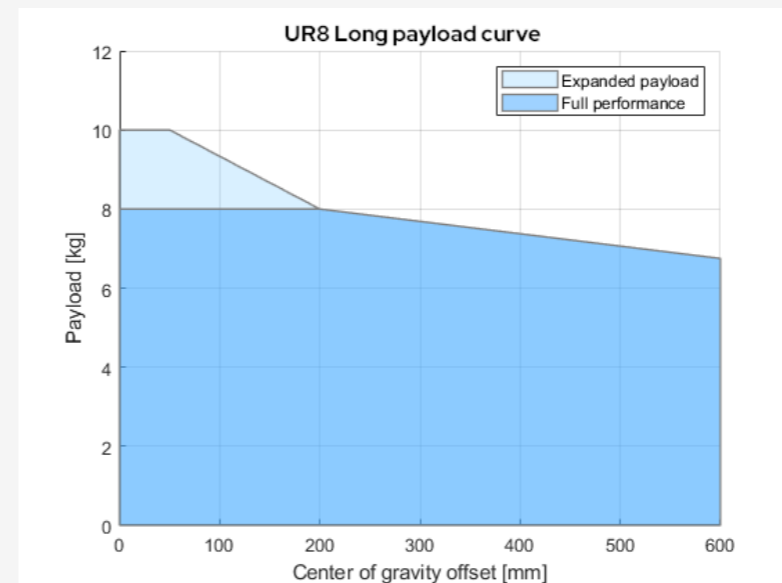
Hardware interfaces	Ethernet 1 Gb/s USB 2.0 USB 3.0 Mini DisplayPort Injection Moulding Machine Interface (SPI AN-146 & Euromap-67)*
Power Source	100-240 VAC, 50-60 Hz

*Only valid for OEM version.

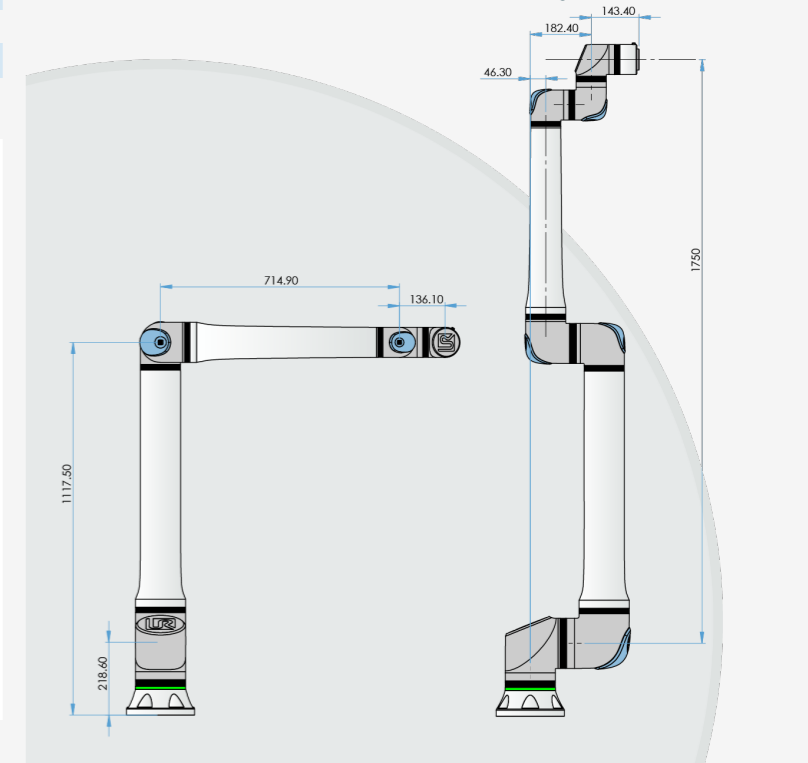
Physical

Control Box Size (W x H x D)	460 mm x 449 mm x 254 mm (18.2 in x 17.6 in x 10 in)
Weight	12 kg (26.5 lbs)
Materials	Powder coated steel

The control box is also available in an OEM version.



Dimensions and reach UR8 Long



UNLESS OTHERWISE SPECIFIED:

Dimensions are in millimeters. Tolerance ± 0,1 mm ± 0,5°

UR8 Long

General specification

Payload	8 kg (17.6 lbs) 10 kg (22 lbs) with boundary conditions according to the manual.
Reach	1750 mm (68.9 in)
Degrees of freedom	6 rotating joints
Programming	12 inch touchscreen with PolyScope graphical user interface
Power consumption (average)	
Maximum power	615 W
Moderate operating settings	350 W
Operating temperature range	Ambient temperature: 0-50°C (32-122°F)
Safety functions	17 configurable safety functions
In compliance with	EN ISO 13849-1 (PLd Category 3), EN ISO 10218-1 and UL 1740
Joint architecture	2-1-3

UR8 Long Robot Arm

Performance

Force sensing, tool flange/torque sensor	Force, x-y-z	Torque, x-y-z
Range	± 150.0 N	± 10.0 Nm
Precision	± 7.5 N	± 0.2 Nm
Accuracy	± 8.3 N	± 0.5 Nm

Movement

Max TCP speed	6 m/s
Pose repeatability per ISO 9283	± 0.08 mm / ± 0.081 mm per ISO 9283 ± 0.0031 in / ± 0.0031 in per ISO 9283

Axis movement	Working range	Maximum speed
Base	± 360°	± 180°/s
Shoulder	± 360°	± 180°/s
Elbow	± 360°	± 240°/s
Wrist 1	± 360°	± 300°/s
Wrist 2	± 360°	± 300°/s
Wrist 3	± 360°	± 300°/s