

# AGIBOT G2

## Industrial-Grade Interactive Embodied Operation Robot

The industrial-grade interactive embodied robot, with sub-millimeter precision dual arms, revolutionizes precision assembly and complex tasks. AGIBOT G2 brings intelligent, flexible, and reliable future technology, injecting new possibilities for humanoid robot collaboration across industries.

A humanoid robot with a white and black body, glowing blue eyes, and dual arms, standing on a mobile base in a factory. It is holding a black tray. In the background, other similar robots are working at industrial machines. The floor has yellow and black safety stripes.

 AGIBOT  
[www.agibot.com](http://www.agibot.com)

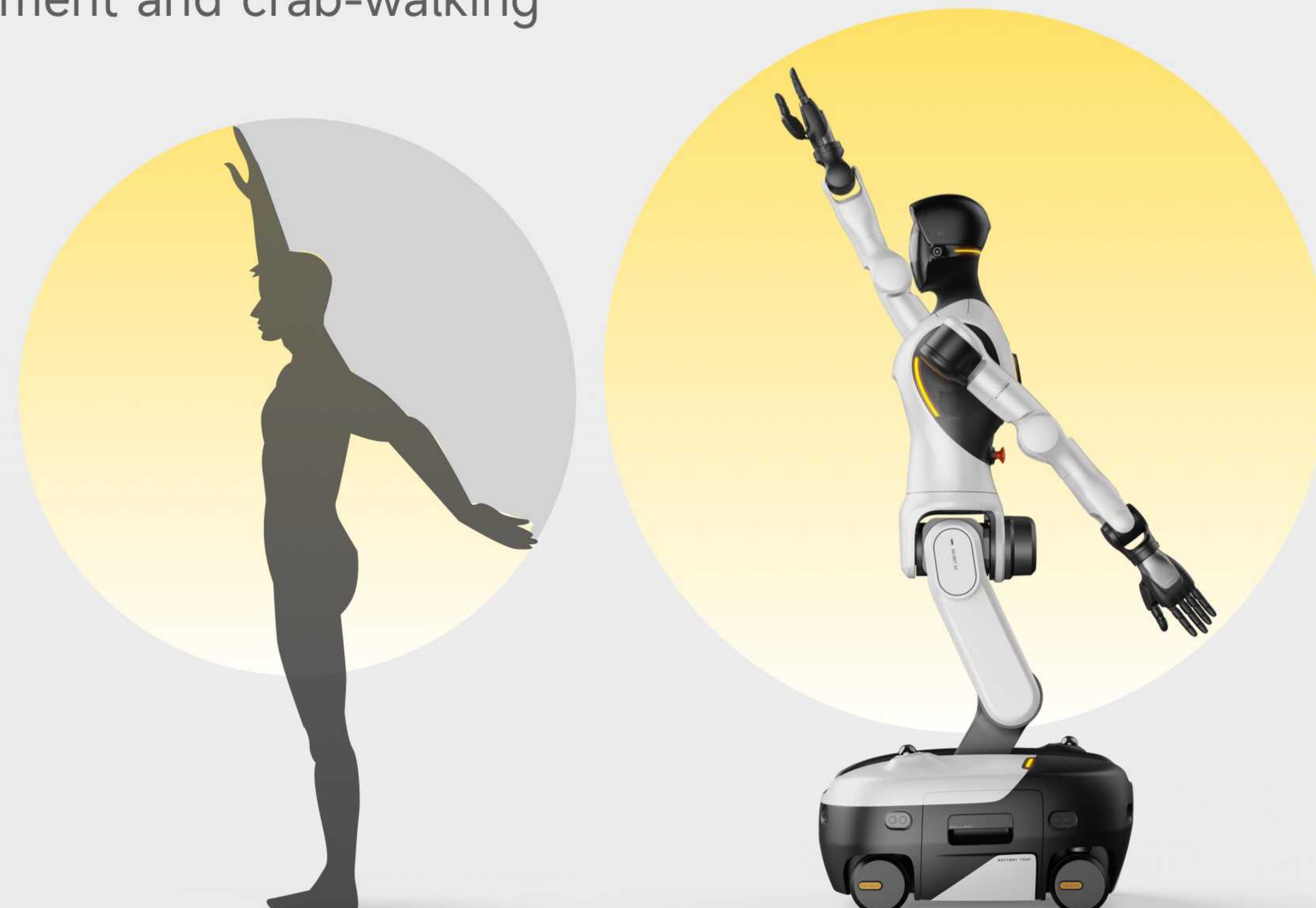
## Advanced Precision Performance

- 100% automotive-grade components for unwavering reliability
- Dual-arm force control precision  $\leq 0.5\text{N}$ , achieving sub-millimeter accuracy
- Powered by NVIDIA Jetson Thor T5000 chip with a computing power of up to 2070 TFLOPS.



## Expanded Operational Workspace

- 26-DOF body for human-like motion
- 5-DOF waist-leg system for fluid movement even in tight spaces
- 4-wheel steer enables in-place rotation, omnidirectional movement and crab-walking



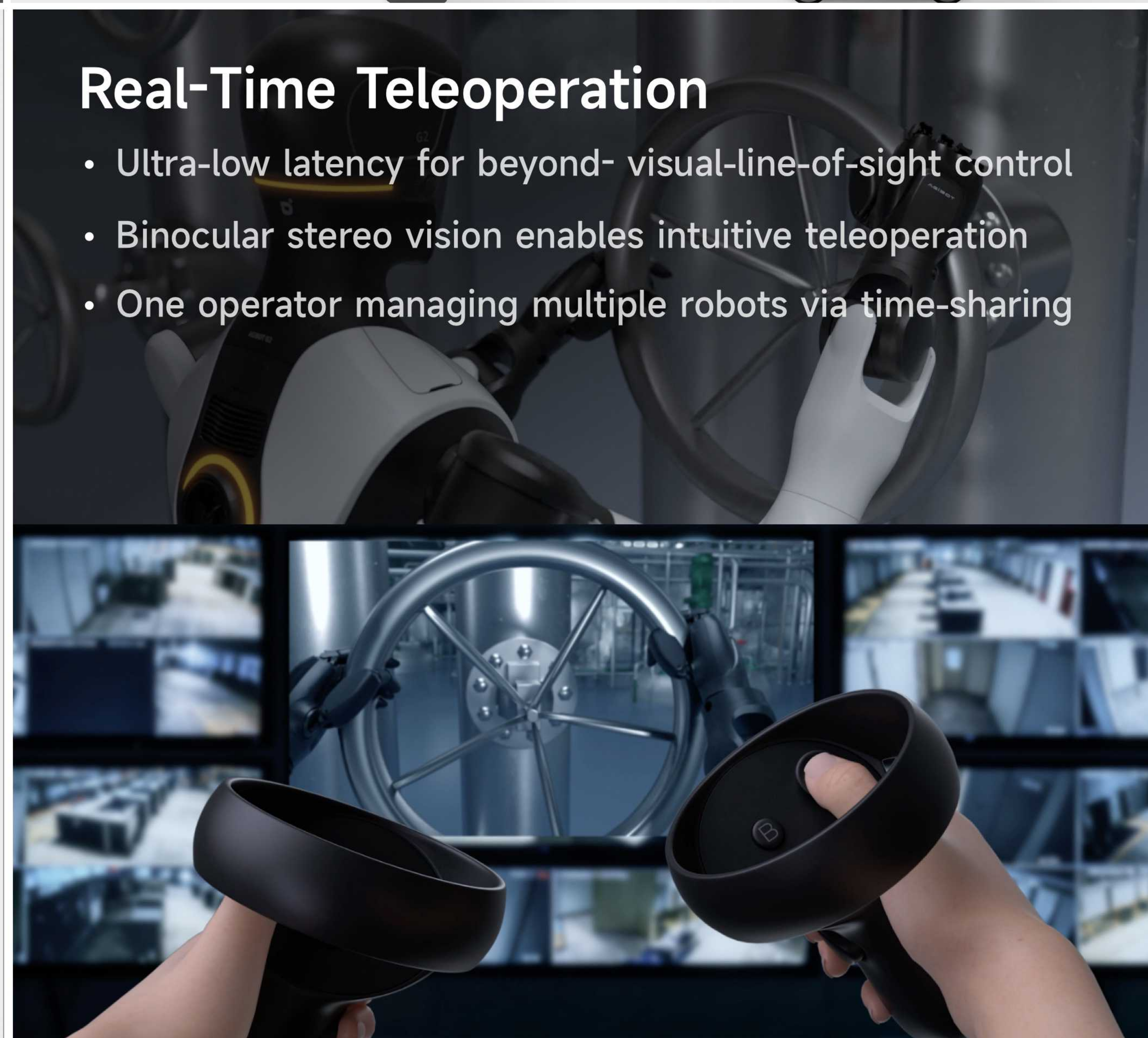
## Multi-Modal Smart Interaction

- Continuous multi-speaker dialogue and knowledge base Q&A
- 1:1 human-like motion



## Real-Time Teleoperation

- Ultra-low latency for beyond-visual-line-of-sight control
- Binocular stereo vision enables intuitive teleoperation
- One operator managing multiple robots via time-sharing



## Safety Assurance

- 360° surround view and high-precision arm collision detection
- Hybrid active-passive system ensures personnel safety



## Long-Lasting Power

- Hot-swappable dual batteries for 24/7 continuous operation
- Autonomous return-to-charge, rapid "full-power" recovery



# AGIBOT G2 Product Specifications

## RGB-D Camera

- Depth Perception

## Stereo Camera

- Depth Video Capture

## Neck

- Roll, Pitch, Yaw

## Computing Platform

- NVIDIA Jetson T5000 2070 TFLOPS (FP4)
- HUIXI R1 500 TOPS (INT8)

## Wrist RGB-D

- Depth Perception

## Dexterous Hand (Optional)

- Up to 19 Active DOF
- 3D Tactile Sensing
- Supports Quick Replacement

## Waist & Legs

- Waist Joint \*3
- Leg Joint \*2

## Chassis

- Speed: 1.5 m/s
- In-place rotation, omnidirectional movement

## Microphone Array

- Sound Source Localization
- Noise Reduction & Echo Cancellation

## Fisheye Camera Array

- 360° Surround View

## Speaker

- 8W

## Network Port

- 10G

## 7-DOF Arm

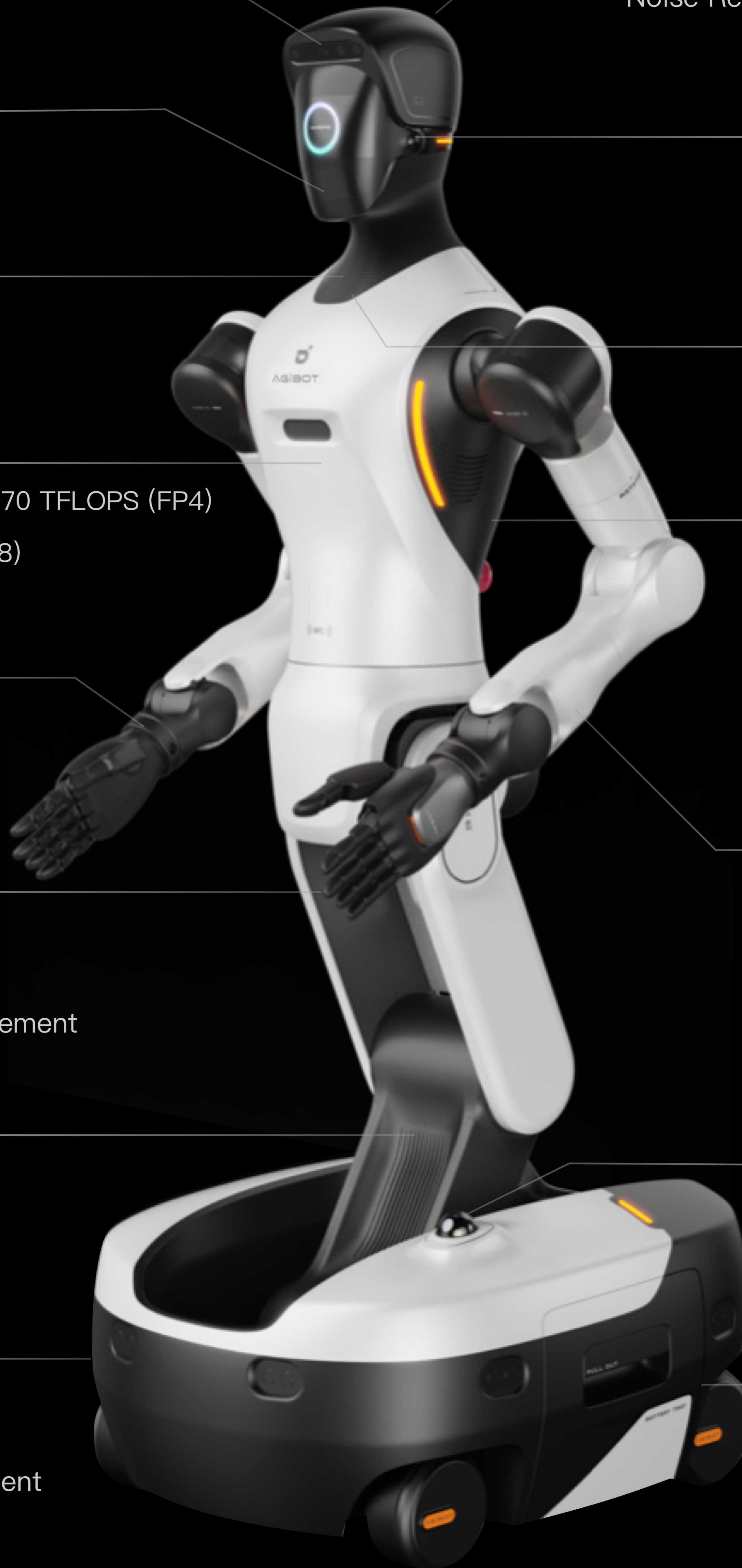
- 5kg Payload
- Full Joint Torque Sensing

## Lidar\*2

- 360° Coverage

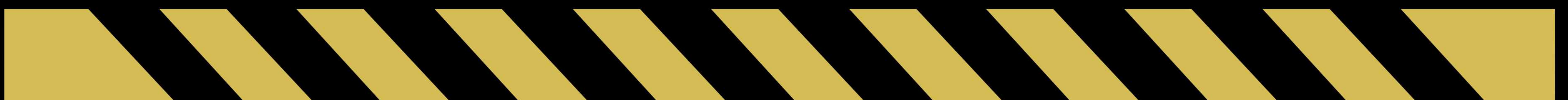
## Battery\*2

- Hot-Swappable
- Automatic Recharging

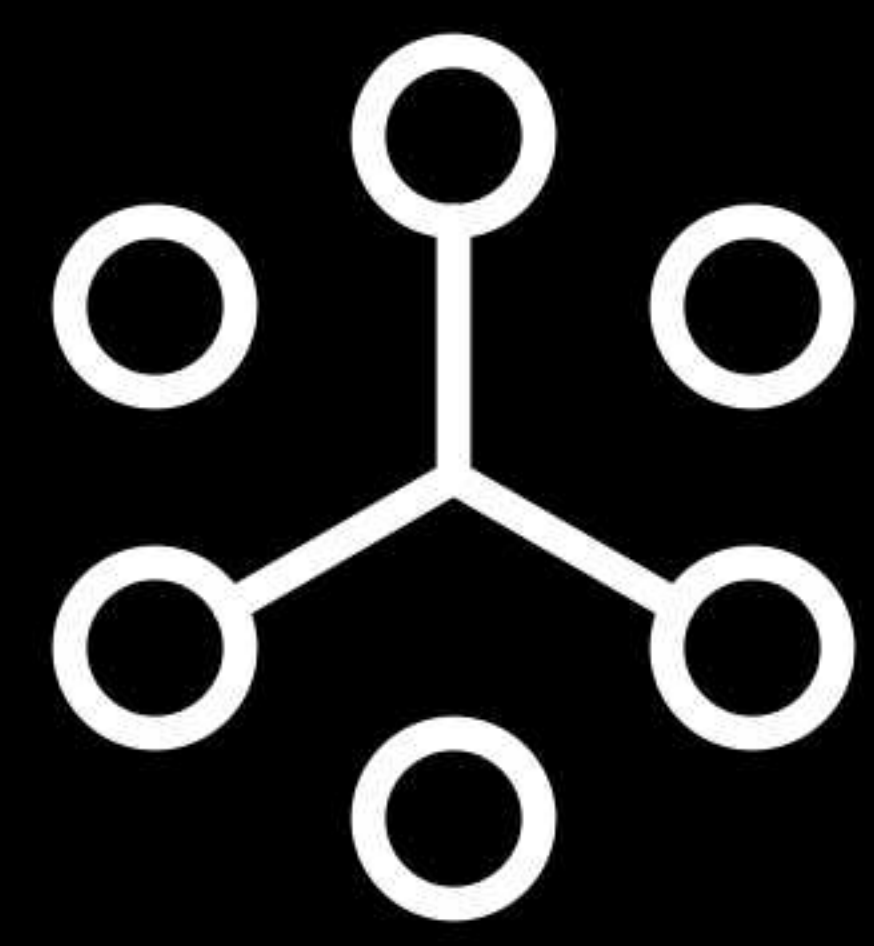


1. Schematic for reference only, actual product may vary.

2. End-effectors (e.g., 012 Dexterous Hand, OmniPicker) are optional extras.

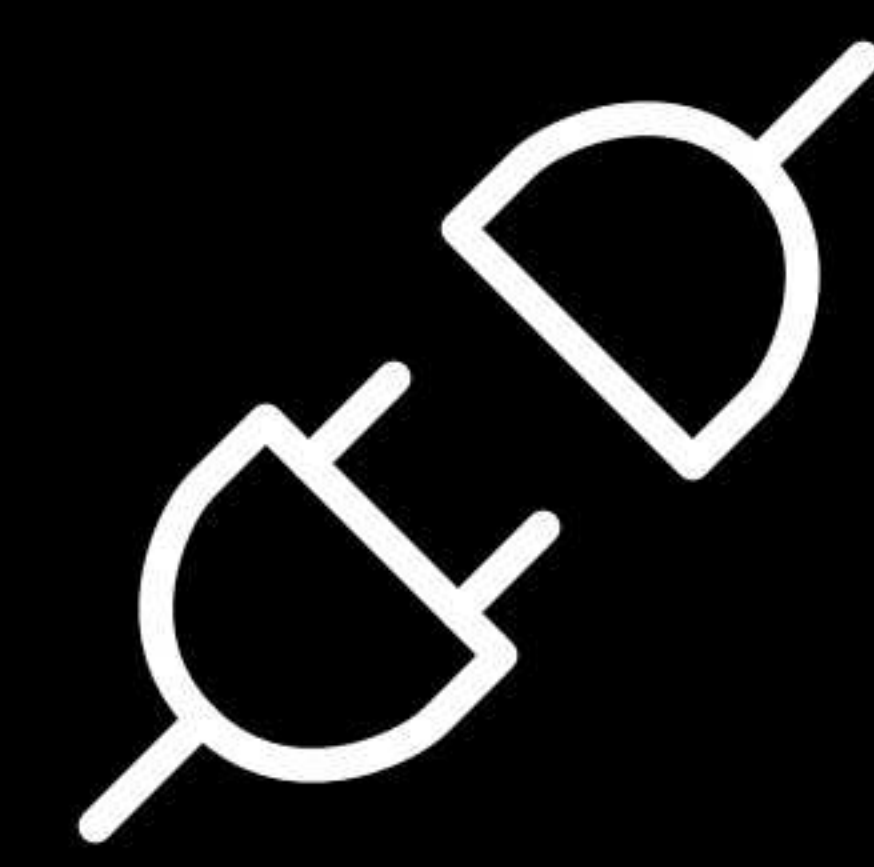


# Developer-Friendly Ecosystem



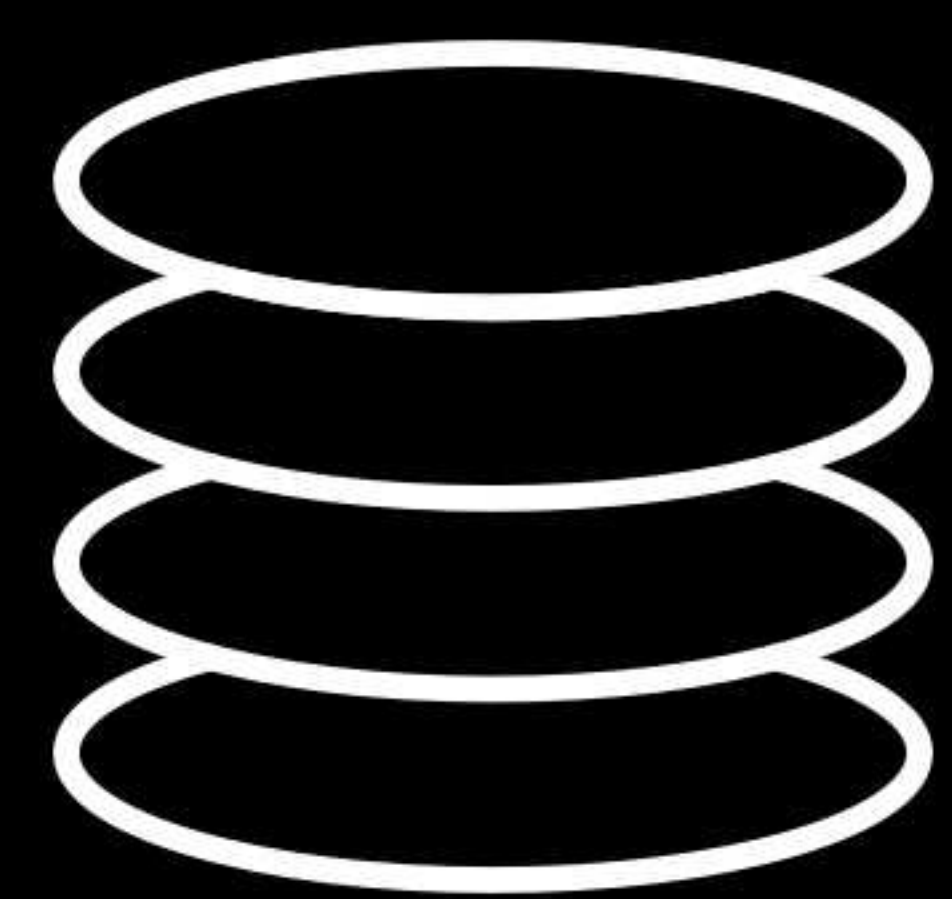
## Genie RL Toolkit

Rapid deployment and model switching with minimal demonstration



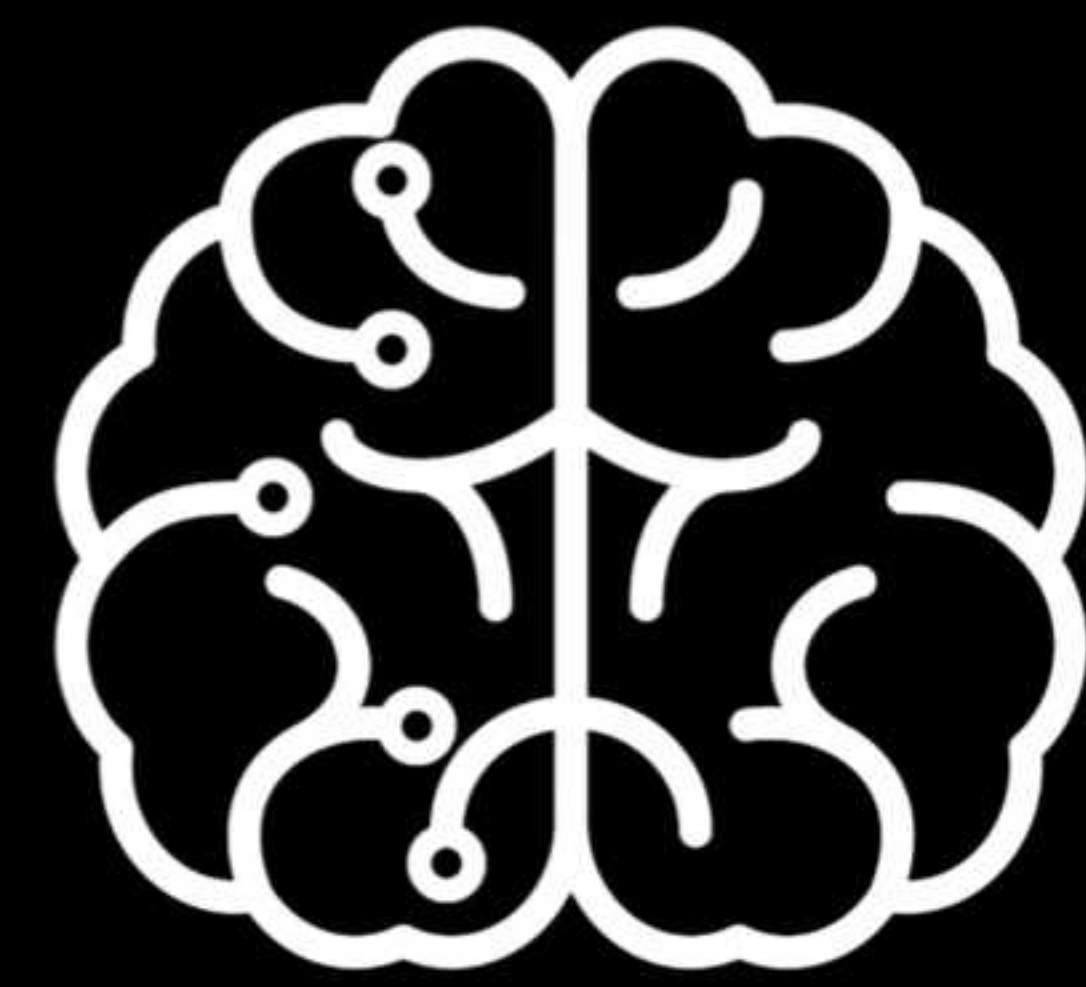
## GDK (Genie Development Kit)

A development toolkit enabling rapid development, deployment, and optimization of Agibot robotic applications and functionalities



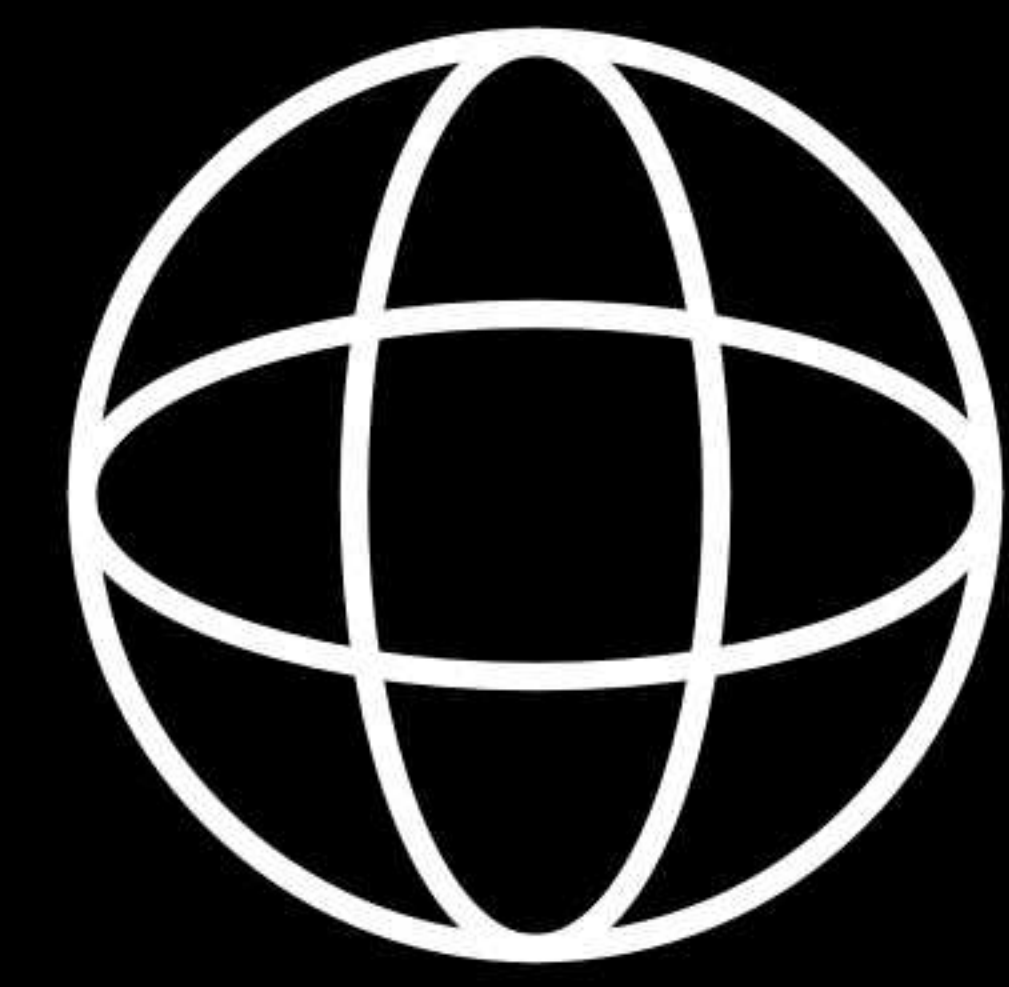
## AGIBOT WORLD

Million-scale real-machine open source dataset



## GENIE OPERATOR-1

An innovative generalist embodied foundation model



## Genie Envisioner

A unified world foundation platform for robotic manipulation

# Applications



High Precision  
Assembly & Operaion



Industrial Inspection



Logistics Sorting



Security Check



Guided Tours



Research & Development

AGIBOT Innovation (Shanghai) Technology Co., Ltd



[www.agibot.com](http://www.agibot.com)



[business@zhiyuan-robot.com](mailto:business@zhiyuan-robot.com)



Official Website



YouTube